

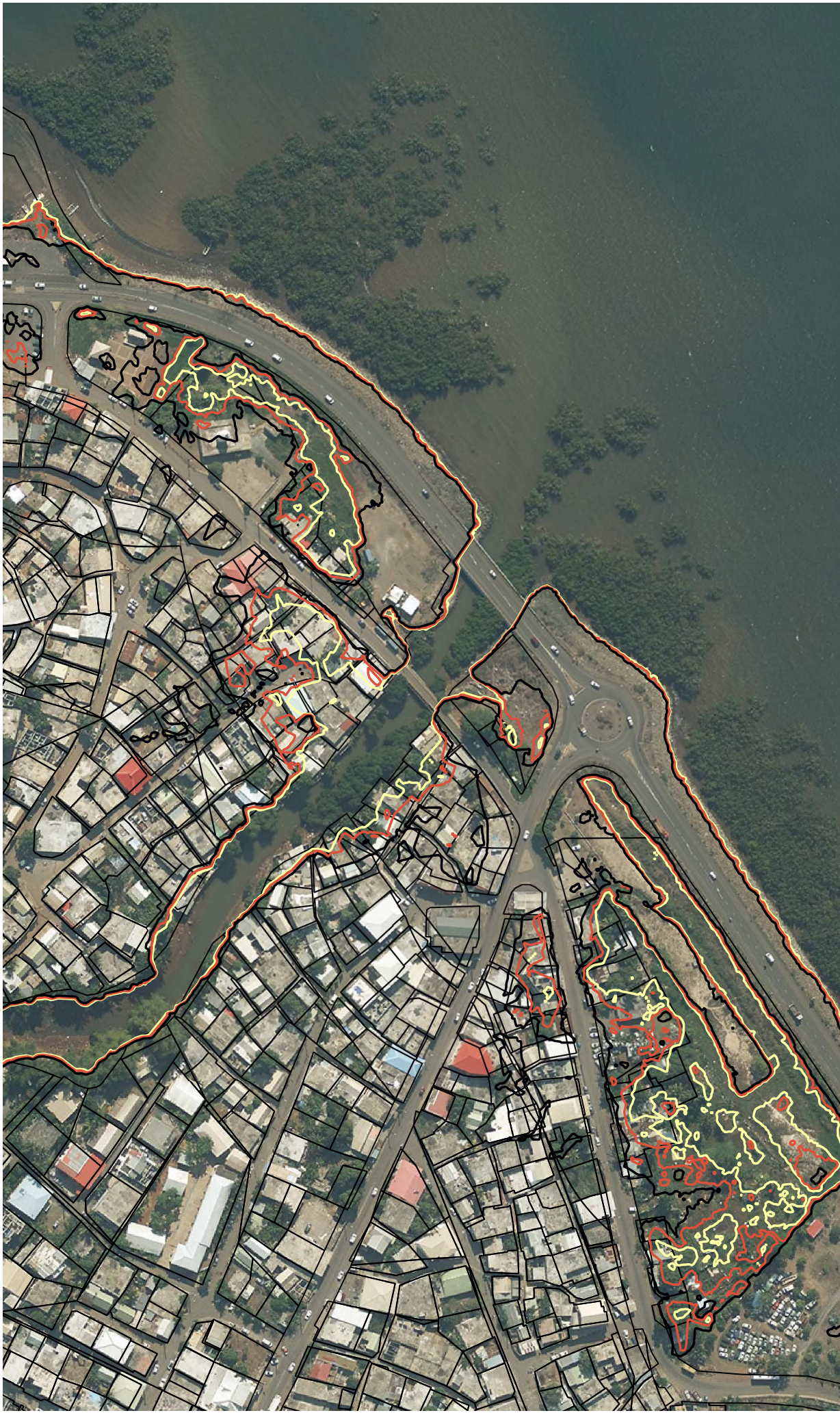
Passamainty

0 100 200 m



PHMA

- PHMA actuelle (2,52m NGM - 4,3m SHOM)
- PHMA + 20cm (2,72m NGM - 4,5m SHOM)
- PHMA + 50cm (3,02m NGM - 4,8m SHOM)



Tsoundzou1 - Kwalé

0 100 200 m



PHMA

- PHMA actuelle (2,52m NGM - 4,3m SHOM)
- PHMA + 20cm (2,72m NGM - 4,5m SHOM)
- PHMA + 50cm (3,02m NGM - 4,8m SHOM)



Tsoundzou 1

0 100 200 m

PHMA

- PHMA actuelle (2,52m NGM - 4,3m SHOM)
- PHMA + 20cm (2,72m NGM - 4,5m SHOM)
- PHMA + 50cm (3,02m NGM - 4,8m SHOM)



Mamoudzou - Terre plein Sud

0 100 200 m



PHMA

- PHMA actuelle (2,52m NGM - 4,3m SHOM)
- PHMA + 20cm (2,72m NGM - 4,5m SHOM)
- PHMA + 50cm (3,02m NGM - 4,8m SHOM)



Mamoudzou - Terre plein Nord /

0 100 200 m



PHMA

- PHMA actuelle (2,52m NGM - 4,3m SHOM)
- PHMA + 20cm (2,72m NGM - 4,5m SHOM)
- PHMA + 50cm (3,02m NGM - 4,8m SHOM)



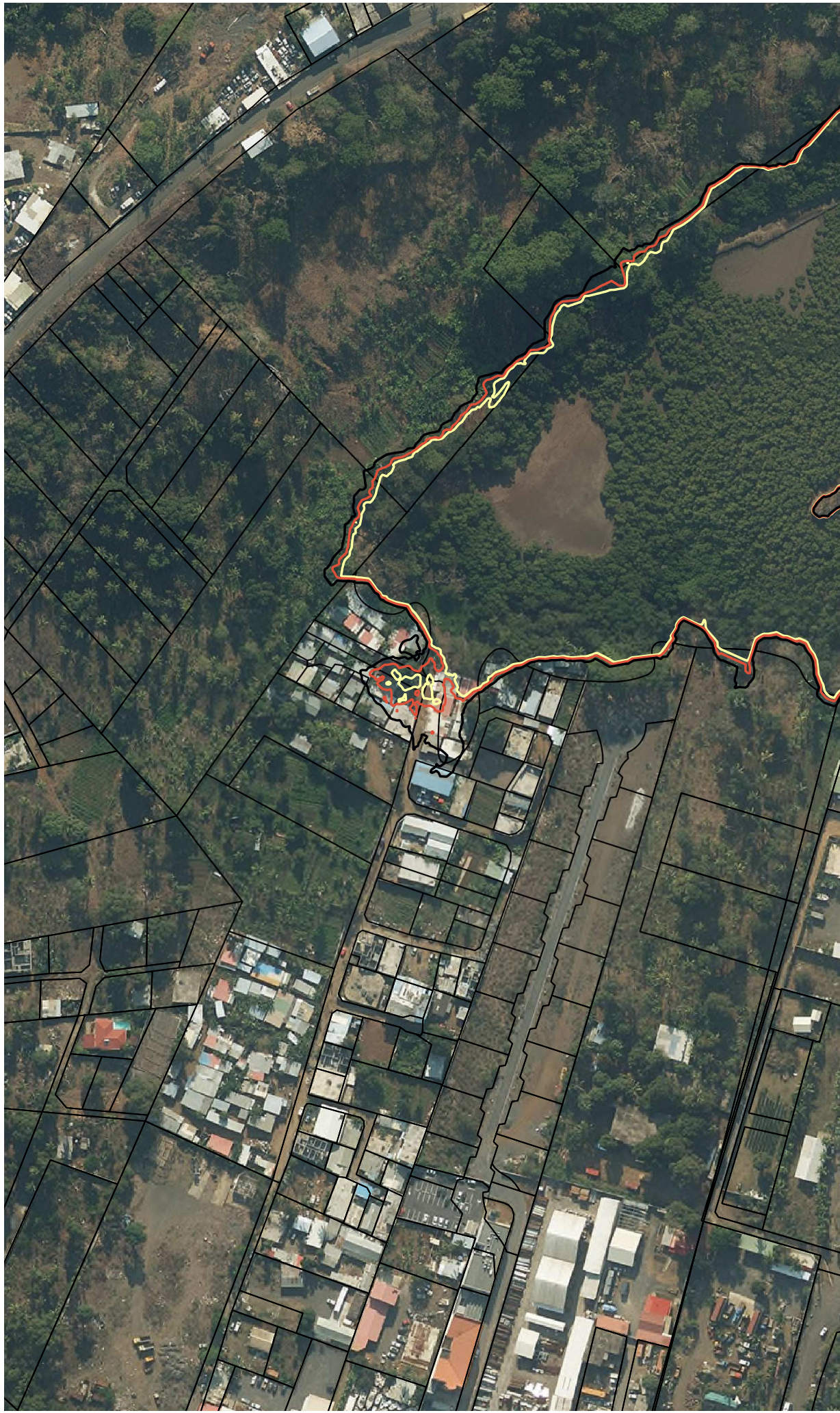
Kaweni - ZI Nel

0 100 200 m



PHMA

- PHMA actuelle (2,52m NGM - 4,3m SHOM)
- PHMA + 20cm (2,72m NGM - 4,5m SHOM)
- PHMA + 50cm (3,02m NGM - 4,8m SHOM)



Kaweni

0 100 200 m



PHMA

- PHMA actuelle (2,52m NGM - 4,3m SHOM)
- PHMA + 20cm (2,72m NGM - 4,5m SHOM)
- PHMA + 50cm (3,02m NGM - 4,8m SHOM)



Mamoudzou - Marché

0 100 200 m

PHMA

- PHMA actuelle (2,52m NGM - 4,3m SHOM)
- PHMA + 20cm (2,72m NGM - 4,5m SHOM)
- PHMA + 50cm (3,02m NGM - 4,8m SHOM)



Mamoudzou - Barge / ponton

PHMA

- PHMA actuelle (2,52m NGM - 4,3m SHOM)
- PHMA + 20cm (2,72m NGM - 4,5m SHOM)
- PHMA + 50cm (3,02m NGM - 4,8m SHOM)

0 100 200 m

