

Petite-terre - Rocher

0 100 200 m



PHMA

- PHMA actuelle (2,52m NGM - 4,3m SHOM)
- PHMA + 20cm (2,72m NGM - 4,5m SHOM)
- PHMA + 50cm (3,02m NGM - 4,8m SHOM)



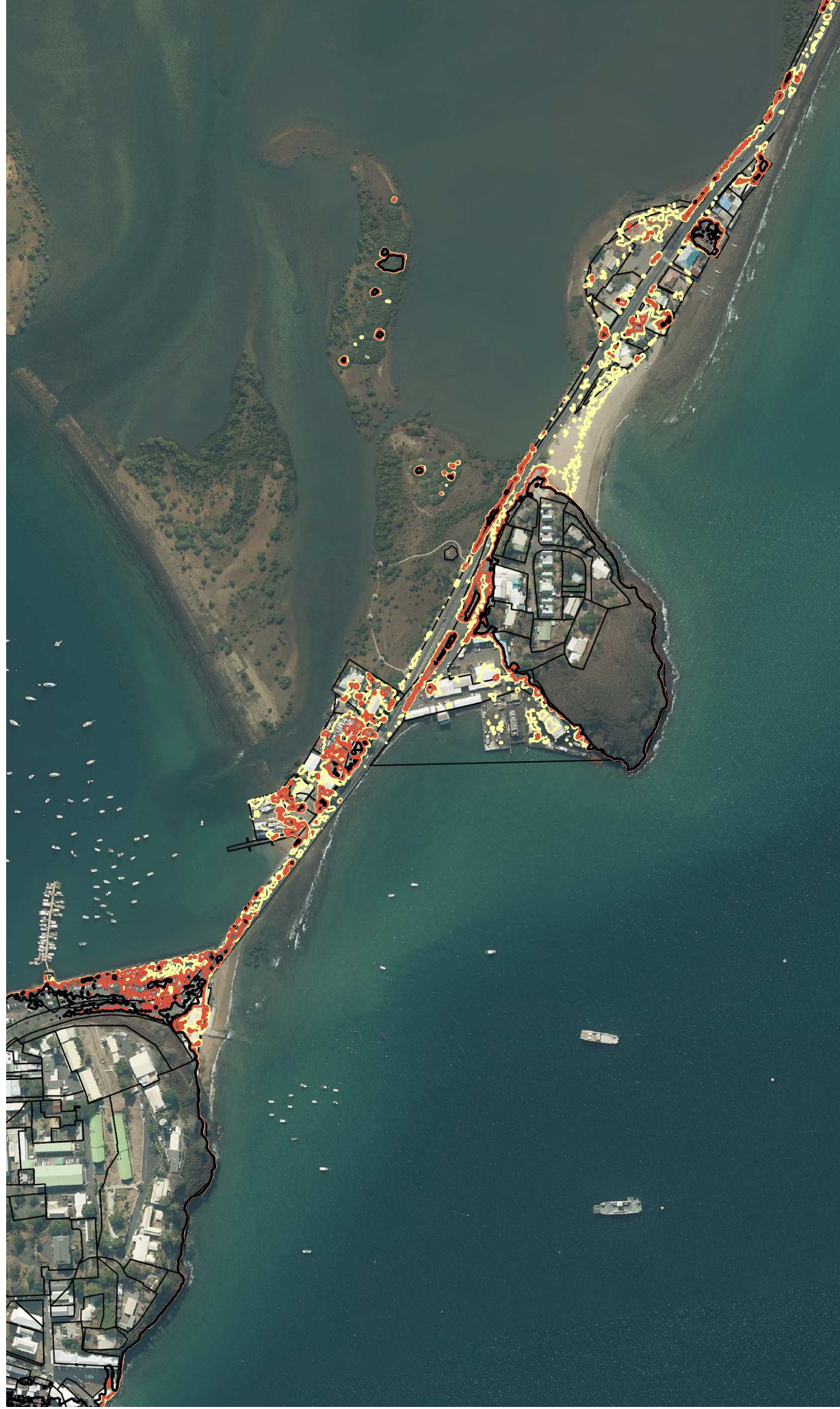
Petite-Terre - bvd des crabes

0 100 200 m



PHMA

- PHMA actuelle (2,52m NGM - 4,3m SHOM)
- PHMA + 20cm (2,72m NGM - 4,5m SHOM)
- PHMA + 50cm (3,02m NGM - 4,8m SHOM)



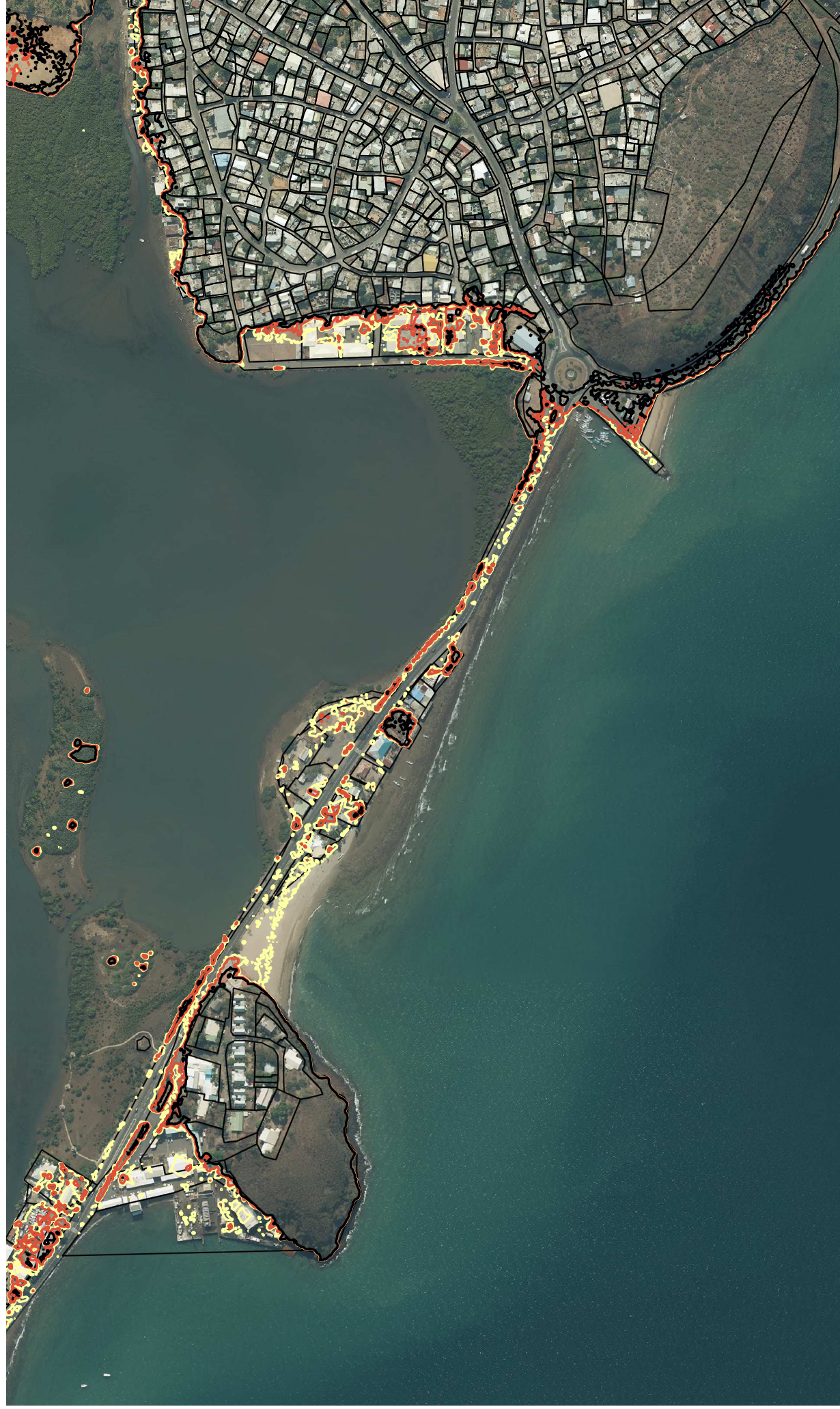
Petite-Terre - Bvd des crabes

0 100 200 m



PHMA

- PHMA actuelle (2,52m NGM - 4,3m SHOM)
- PHMA + 20cm (2,72m NGM - 4,5m SHOM)
- PHMA + 50cm (3,02m NGM - 4,8m SHOM)



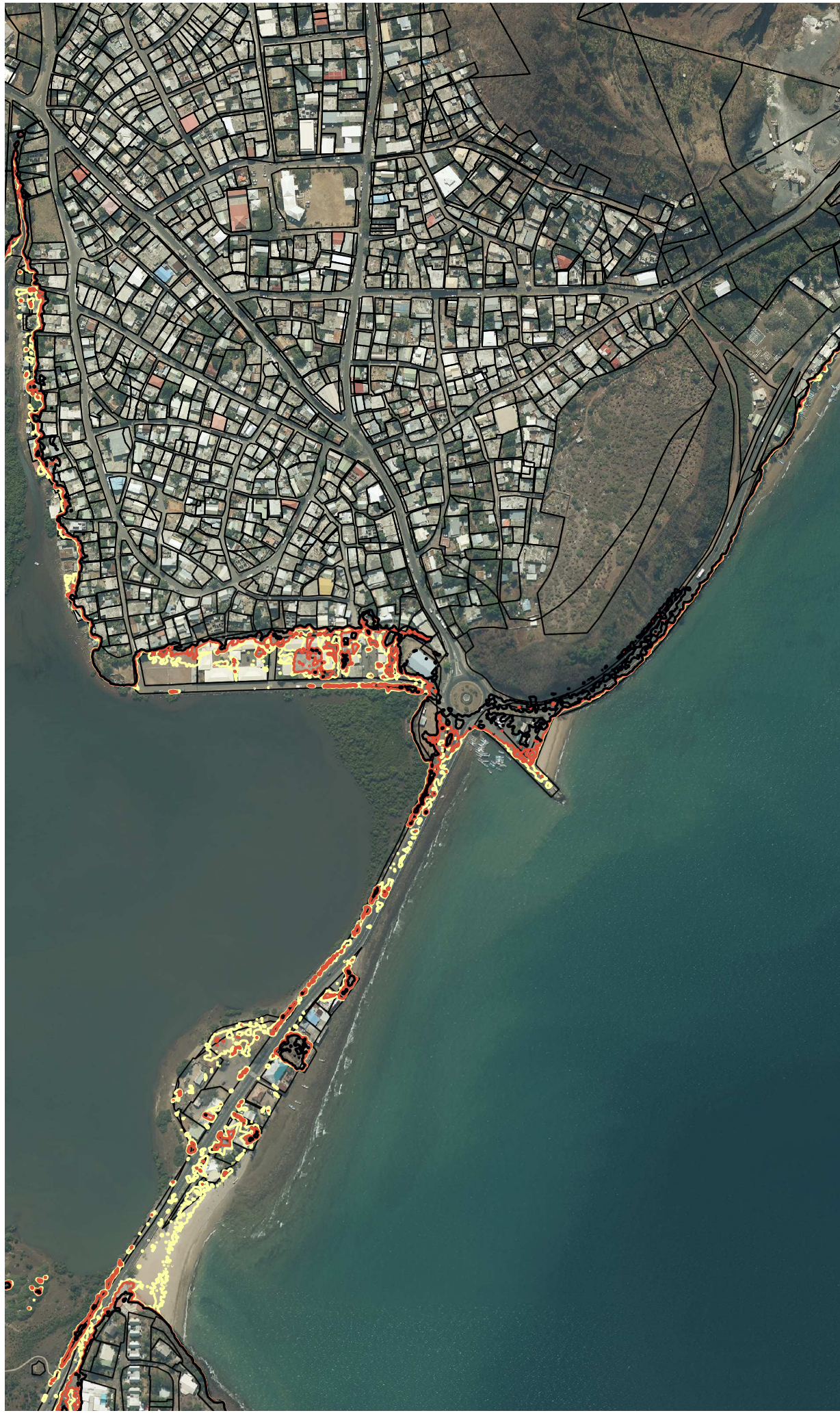
Petite-Terre - Four à chaux

0 100 200 m



PHMA

- PHMA actuelle (2,52m NGM - 4,3m SHOM)
- PHMA + 20cm (2,72m NGM - 4,5m SHOM)
- PHMA + 50cm (3,02m NGM - 4,8m SHOM)



Dzaoudzi



PHMA

- PHMA actuelle (2,52m NGM - 4,3m SHOM)
- PHMA + 20cm (2,72m NGM - 4,5m SHOM)
- PHMA + 50cm (3,02m NGM - 4,8m SHOM)

